

Duct airflow monitors, including mounting flange, electronic, one-step and two-step, with active/switching output

The electronic airflow monitor RHEASGARD® KLGF measures the flow velocity in m/s and converts the measurement signal into a standard signal of 0 - 10V (relative) (flow measuring transducer). This flow sensor is optionally available with or without display. RHEASREG® KLSW provided with a switching output (one-step or two-step) is designed as flow sensor/flow monitor. Fine adjustment of the upper range limit by the user is possible at a potentiometer. The airflow monitor/airflow sensor is applicable for monitoring or controlling airflows in ducts, at ventilators and dampers, for flow-dependent monitoring of humidifiers and electric heating registers according to DIN 57100, part 420, or for use in connection with DDC systems.

TECHNICAL DATA:

Power supply: 24V AC/DC or
230V AC +5/-13%, 50...60Hz
Output: 1 or 2 potential-free relays (changeover contacts)
10A, max. 2 kW or 0 - 10V (relative, non-linear)
Power consumption: ca. 3 VA

One-step:

Operating range: 0.1...30 m/s (adjustable)
Sensitivity: 0.1...30 m/s

Two-step (KLSW-5/6):

Operating range: 0.1...15 m/s (adjustable)
Sensitivity: 0.1...5 m/s
Switching hysteresis: ca. 1...10% (adjustable)
Start bridging: ca. 15...120 s (adjustable)
Switch-off delay: ca. 2...20 s (adjustable)
Max. sensor cable length: 50 m; avoid laying parallel with
mains voltage-carrying lines,
or use shielded cables
Ambient temperature: 0°C...+60°C at the device
0°C...+80°C medium
Sensor: sensor breakage protection,
temperature-compensated
Connecting head: plastic, material polyamide,
30% glass-globe-reinforced,
colour pure white (similar RAL 9010)
Dimensions: 108 x 73.5 x 70 mm
72 x 64 x 39.4 mm (KLGF-1 without display only)
Cable gland: M 16, including strain relief
Protective tube: metal, Ø 10 mm, nominal length NL = 140 mm
Process connection: by mounting flange
(included in the scope of delivery)
Electrical connection: 0.14 - 1.5 mm², via screw terminals on circuit board
Protection class: I (according to EN 60730) at UB = 230V
III (according to EN 60730) at UB = 24V
Protection type: IP 65 (according to EN 60529)
Standards: CE conformity,
EMC directive 2004/108/EC,
low-voltage directive 73/23/EC

KLSW-xx
KLGF-2

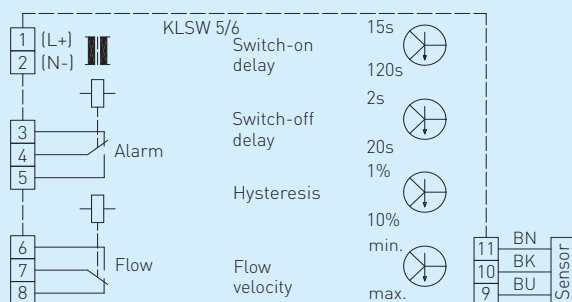


KLGF-1
without display

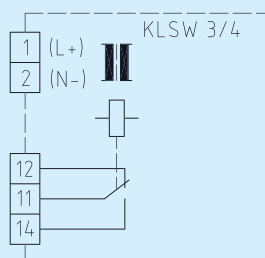


Schematic diagram

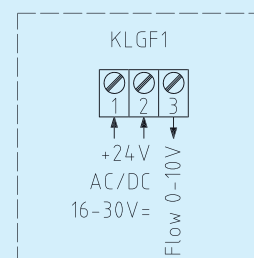
KLSW-5/6



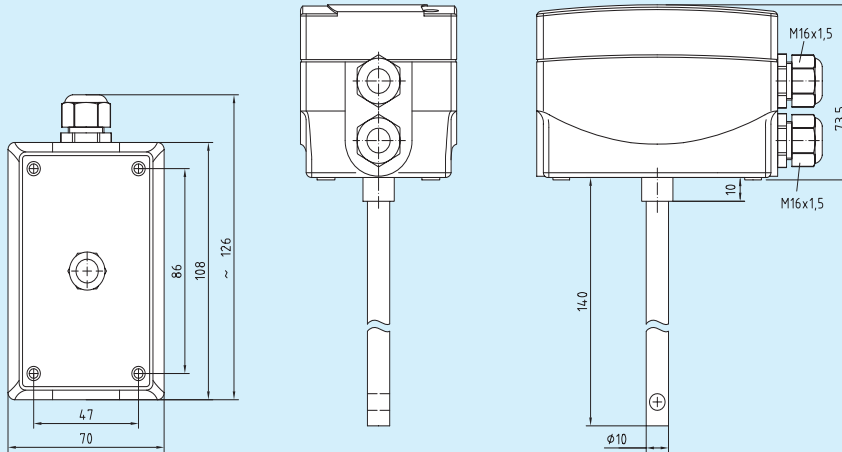
Schematic diagram KLSW-3/4



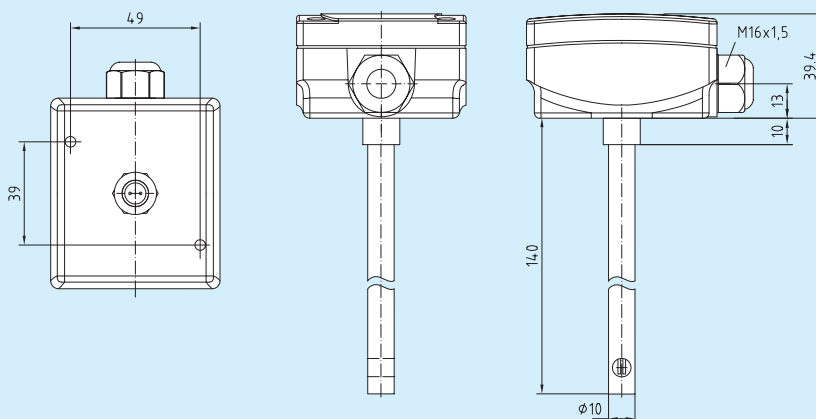
Connecting diagram KLGF-1/2



Dimensional drawing

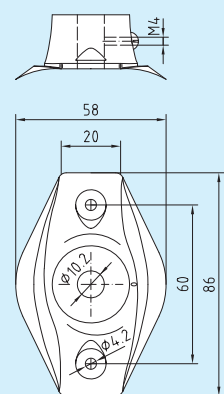
KLSW-xx
KLGF-2
KLGF-1 with display

KLGF - 1
with display


Dimensional drawing

KLGF - 1 without display
[compact]


Dimensional drawing

MF



RHEASREG® KLSW, including mounting flange

Type / WG1	Relay (Steps)	Type	Power-Supply	Output
KLSW - 3	1	1 [compact]	230 V AC	1 x changeover contact (1-step)
KLSW - 4	1	1 [compact]	24 V AC / DC	1 x changeover contact (1-step)
KLSW - 5	2	2	230 V AC	2 x changeover contact (2-step)
KLSW - 6	2	2	24 V AC / DC	2 x changeover contact (2-step)
Optional: Automatic reset (without reset button) KLSW is delivered with a manual reset button as a standard.				

RHEASGARD® KLGF, including mounting flange

Type / WG1	Relay (Steps)	Type	Power Supply	Output
KLGF - 1	-	1 [compact]	24 V AC / DC	0-10 V (relative)
KLGF - 2	-	1 [compact]	230 V AC	0-10 V (relative)
KLGF - 1 - Display				